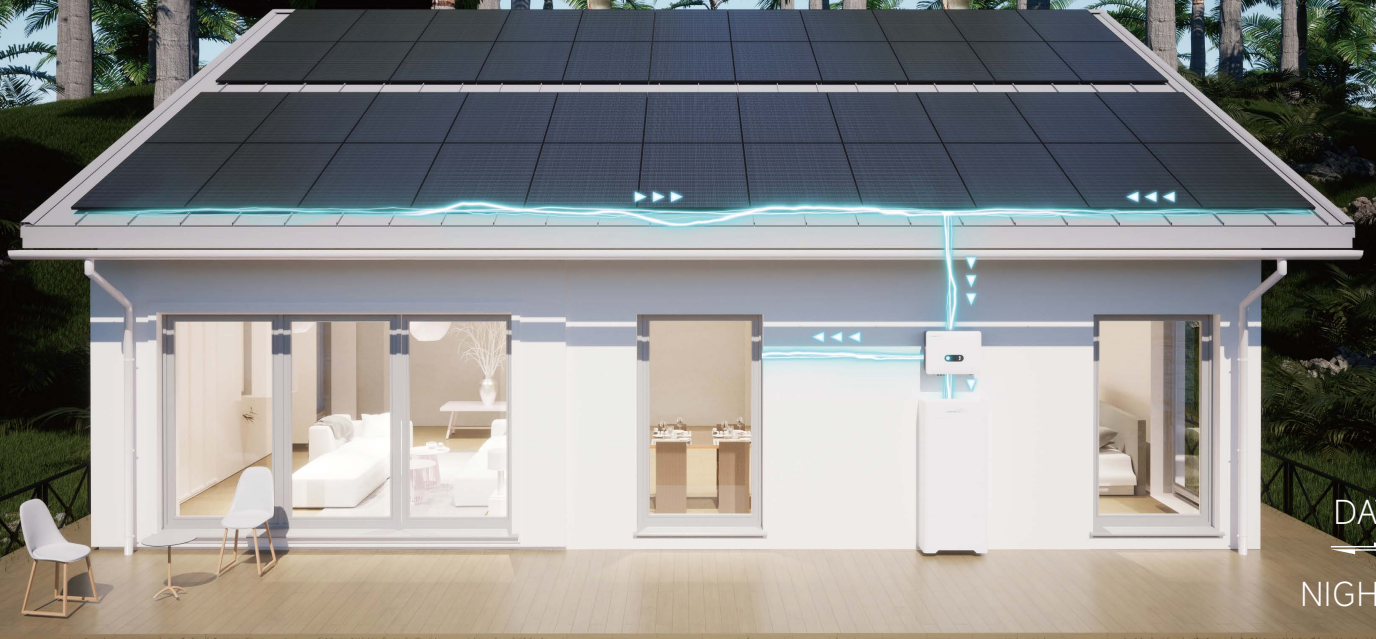




SLENERGY



Share-Home

One-Stop Residential Energy Solution



Valuable

Standardized BOM,save design time
Quick installation,save labor cost
Full process service,customer peace of mind



Smart

Real-time monitoring,intelligent control
Intelligent detection,safe operation
Remote upgrade,fault alarm



Reliable

Integrated design,lower failure rate
Unified standard,higher product quality
Active power off protection and Arc-fault circuit interrupter,safer system



Simple

Preassembled parts, simple connection
Packing in system, convenient for warehouse sorting

The high voltage hybrid inverter applies to the three-phase power grid with a voltage of 230/400V and a frequency of 50/60Hz. Mounting structure is tailored specifically for Pitched Roof buildings of Concrete Tile, Clay Tile or Slate Tile.

iShare Home Smart Solar Solution							
Model	iShare-Home 4kW	iShare-Home 5kW	iShare-Home 6kW	iShare-Home 8kW	iShare-Home 10kW	iShare-Home 12kW	iShare-Home 15kW
System capacity (kWAC)	4	5	6	8	10	12	15
No. PV modules (pcs)/425W	10/12/14	16	18/20	22/24/26/28	30/32/34	36/38/40/42	44/46/48/50
Effective Roof Area Approx.	20m ² -30m ²	35m ² -40m ²	36m ² -44m ²	48m ² -65m ²	65m ² -85m ²	90m ² -110m ²	115m ² -135m ²
Inverter	SL-D4KTR-H25	SL-D5KTR-H25	SL-D6KTR-H25	SL-D8KTR-H25	SL-D10KTR-H25	SL-D12KTR-H25	SL-D15KTR-H40
Battery	SL-BH-3-7 -SL-BH-8-20						
Cable set	DC Cable: H1Z2Z2-K 1x6mm ² ; UL 116270 10AWG; UL 11627 8AWG						
	AC Cable: NYY-J 5x4mm ² /5x6mm ² ; NYY-J 5x6mm ² /5x10mm ² ; H03VV-F 4x0.5mm ²						
	Grounding Cable: H07V-K 6mm ² ; NYY 1x6mm ²						
	Communication Cable: UTP CAT5e						
Mounting Structure set	Connectors						
	Rail, hook kit, rail connector, mid-clamp, end-clamp, earthing lug and other accessories						
iBox	Optional						
Cloud & APP	1 set						
Power generation estimates	12-17kWh/day 4366-6110kWh/year	App.19kWh/day App.6986kWh/year	21-24kWh/day 7860-8734kWh/year	29-32kWh/day 10590-11650kWh/year	36-40kWh/day 13100-14847kWh/year	43-50kWh/day 15720-18340kWh/year	52-60kWh/day 18340-21833kWh/year
Larger capacity systems can be configured according to demand.							
The power generation is calculated based on Munich, Germany. The annual peak sunshine hours are 1253h. Each 1kWh generated reduce 0.997kg of CO ₂ .							
PV Modules		SL-DG108NA-425					
Maximum power [Pmax/W]	425						
Open-circuit voltage [Voc/V]	38.54						
Short circuit current [Isc/A]	13.79						
Peak power voltage [Vmp/V]	32.35						
Peak power current [Imp/A]	13.14						
Temperature coefficient of short circuit current [Isc]	+0.045%/°C						
Temperature coefficient of open circuit voltage [Voc]	-0.250%/°C						
Temperature coefficient of peak power [Pmax]	-0.300%/°C						
Max. Efficiency	21.80%						
Dimension [L*W*H mm]	1722x1134x30						
Weight [kg]	20.5						
Certificate	IEC 61215, IEC 61730						
	ISO 9001: 2015 Quality Management System						
	ISO 14001: 2015 Environment Management System						
	IEC 62716, IEC 61701: Ammonia, Salt mist corrosion test						
Waranty	IEC TS 62804-1, IEC 60068-2-68: PID test, Dust and Sand test						
Waranty	Warranty 30 years linear power and 25 years material and workmanship						
Inverter							
Model	SL-D4KTR-H25	SL-D5KTR-H25	SL-D6KTR-H25	SL-D8KTR-H25	SL-D10KTR-H25	SL-D12KTR-H25	SL-D15KTR-H40
PV Input							
Recommended Max. input power [kW]	6.0	7.5	9.0	12.0	15.0	18.0	22.5
Start-up voltage [V]	135	135	135	135	135	135	135
Max. DC input voltage* [V]	1000*	1000*	1000*	1000*	1000*	1000*	1000*
Rated DC input voltage [V]	620	620	620	620	620	620	620
MPPT voltage range** [V]	120-950	120-950	120-950	200-950	200-950	200-950	200-950
No. of MPP trackers	2	2	2	2	2	2	2
No. of DC inputs per MPPT	1/1	1/1	1/1	1/1	1/1	1/1	2/2
Max. input current [A]	15/15	15/15	15/15	15/15	15/15	15/15	30/30
Max short-circuit current [A]	20/20	20/20	20/20	20/20	20/20	20/20	40/40
Battery Side							
Battery type	Lithium Battery (with BMS)						
Battery voltage range [V]	135-750						
Maximum charging/discharging current [A]	25/25						
	40/40						
Grid Side							
Rated output power [kW]	4.0	5.0	6.0	8.0	10.0	12.0	15.0
Max. output apparent power [kVA]	4.4	5.5	6.6	8.8	11.0	13.2	16.5
Max. input apparent power*** [kVA]	8.0	10.0	12.0	16.0	16.5	16.5	30
Max. charging power of battery [kW]	4.0	5.0	6.0	8.0	10.0	12.0	15
Rated AC voltage	3L/N/PE; 220/380V;230/400V;240/415V						
Rated AC frequency [Hz]	50/60	50/60	50/60	50/60	50/60	50/60	50/60
Max. output current [A]	6.7	8.3	10.0	13.3	16.5	20.0	33.5
Power factor	0.8 leading ... 0.8 lagging						
Max. total harmonic distortion	<3% @Rated output power						
DCI	<0.5%In	<0.5%In	<0.5%In	<0.5%In	<0.5%In	<0.5%In	<0.5%In
Back-up side							
Rated output power [kW]	4.0	5.0	6.0	8.0	10.0	12.0	15.0
Max. output apparent power [kVA]	4.4	5.5	6.6	8.8	11.0	13.2	16.5
Max. output current [A]	6.7	8.3	10.0	13.3	16.5	20.0	25.0
UPS switching time	<10ms	<10ms	<10ms	<10ms	<10ms	<10ms	<10ms
Rated output voltage	3L/N/PE; 220/380V;230/400V;240/415V						
Rated output frequency [Hz]	50/60	50/60	50/60	50/60	50/60	50/60	50/60
Peak output apparent power****[kVA]	8,60s	10,60s	12,60s	16,60s	20,60s	20,60s	25,60s
Voltage harmonic distortion	<3% @Linear load						

Efficiency							
Max. Efficiency	98.10%	98.10%	98.10%	98.20%	98.20%	98.20%	98.40%
European efficiency	97.30%	97.30%	97.30%	97.40%	97.40%	97.40%	97.50%
Compliance	IEC/EN 62109, IEC/EN 61000, EN50549-1, TOR Generator Type A, VDE-AR-N-4105						
Warranty	10 years						

Protection		General Data	
DC reverse polarity protection	Integrated	Over voltage category	PV:II Main: III
Battery input reverser connection protection	Integrated	Dimensions [WxHxD mm]	534x418x210
Insulation resistance protection	Integrated	Weight [kg]	26kg (4-12k)/ 31kg (15k)
Surge protection	Integrated	Protection Degree	IP65
Over-temperature protection	Integrated	Standby self-consumption [W]	<15
Residual current protection	Integrated	Topology	Transformerless
Islanding protection	Integrated	Operating Temperature Range [°C]	-30-60
AC over-voltage protection	Integrated	Relative Humidity	0-100%
Overload protection	Integrated	Operating Altitude	3000 (>3000m derating)
AC short-circuit protection	Integrated	Cooling	Natural Convection(4-12k) / Smart Fan(15k)
		Noise Level [dB]	<25(4-12k) / <40(15k)
		Display	OLED&LED
		Communication	CAN, RS485, WiFi/LAN(Optional)

* Max. operating DC voltage is 850V, max. withstanding DC voltage is 1000V.

**The maximum MPPT voltage and operating voltage upper limit will be reduced to 900 V when inverter connects and works with battery

*** Max apparent power from the grid means the maximum power imported from the utility grid used to satisfy the backup loads and charge the battery.

**** The output power will exceed the rated value only when the power in the PV array is sufficient, and the duration of the overload is related to the overload power

1) G98: 3.68kVA; 2) G98: 16.00A; 3) AS 4777.2: 5.0kW, VDA-AR-N 4105: 4.6kW; 4)AS 4777.2: 5.0kVA, VDE-AR-N 4105: 4.60kVA, C10/11: 5.0kVA;5) AS 4777.2: 21.7A, VDA-AR-N 4105: 21.0A, C10/11: 21.7A

Battery

Model	SL-BH-3-7	SL-BH-4-10	SL-BH-5-12	SL-BH-6-15	SL-BH-7-17	SL-BH-8-20
Electrical Parameters						
No. of series battery	3	4	5	6	7	8
Rated energy [kWh]	7.68	10.24	12.8	15.36	17.92	20.48
Usable energy [kWh]	6	9.2	11.52	13.8	16.13	18.4
Rated voltage [V]	153.6	204.8	256	307.2	358.4	409.6
Voltage range [V]	134.4-172.8	179.2-230.4	224-288	268.8-345.6	313.6-403.2	358.4-460.8
Rated capacity [Ah]	50					
Charge current [A]	25(Recommended)/50(MAX)					
Dischage current [A]	25(Recommended)/50(MAX)					
Cycle times	80% DOD, cycles >6000, residual capacity >70%					
Communication	RS485/RS232/CAN 2.0					
Protection function	Over voltage/Under voltage/Over temperature/Low temperature/Over current/Short circuit					
Size [WxDxH, mm]	710x320x639	710x320x776	710x320x913	710x320x1050	710x320x1187	710x320x1324
Weight [kg]	118	150.8	183.6	216.4	249.2	282

Working Conditions

Installation	Indoor
Working temperature	-10°C-50°C
Optimum working temperature	20°C-60°C
Storage temperature	-30°C-60°C
Protection degree	IP54
Humidity	5%-95%
Altitude [m]	≤2000
Cooling	Natural
Certificate	CE,UN38.3, MSDS, CB/EMC, IP
Warranty	10 years

Mounting System

Product Name	Tile Hook
Installation Site	Pitched Roof
Foundation	Tile, Flat Tile, Slate Tile, Asphalt Shingle Tile
Tilt Angle	15°-60°
Wind Load	0.8KN/m
Snow Load	1.6KN/m
Applicable Solar Module	Framed or Frameless
Panel Layout	Portrait or Landscape
Design Standard	AS/NZS 1170, DIN 1055, JIS C8955: 2017 International Building Code IBC2009; California Building Code CBC 2010;
Hook Materia	Small Components
Fastener	SUS304 & Zinc-Nickel Alloy Electroplated
Small Components	AL6005-T6(Anodized)
Color	Silver and black or Customized Color
Certificate	TUV
Warranty	10 years



Slenergy Technology GmbH

Address: HAMBURGER ALLEE 2-4 60486 FRANKFURT AM MAIN

Email: marketing@slenergy.com

Website: www.slenergy.com

Disclaimer: The information in this document is for reference only, and does not constitute any offer or acceptance. The changes of the product parameters or configuration are subject to the latest information.