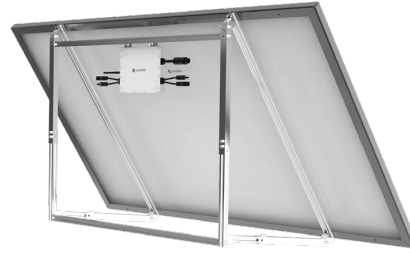
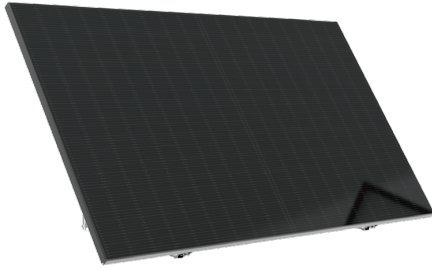


iShare Home-Mini Smart Solar System

iShare Home Mini Solar System is a micro power generation system for home users that integrates PV modules, micro-inverter, bracket system and cable set. It converts DC generated by sunlight into AC for home use, which is provided for home loads.



High Efficiency

High efficiency All Black PV modules
Low voltage for safe operation



Multi-Scenarios Application

Adapt to multiple scenarios: balcony, Garden, Wall and etc.
Alluminum alloy, light weight and better corrosion resistance
Adjustable angle 30° - 50°, flexible to different region



Extreme safety

Low voltage Safe operation
Suitable for a variety of outdoor environments with IP67 Degree Protection
Module level real-time monitoring, Intelligent detection, Remote upgrade, fault alarm



Pre-Installation and Connection

Standardized wire length, pre-installed plugs and pre-connected
All components in one box and highly pre-assembled, easy installation

System Configuration

System capacity (W)	600
No. PV modules (pcs)/405W	2
Inverter	SL-M600-C
Plug + AC cable+Female 3P Connector	JT008 H07RN-F 3G1.5mm2 Black (5 meters) 104420300 X 2_42A
Mounting Structure set	Alluminum alloy 6005-T6, SUS304

Components

PV modules	
Model	SL-108PA-405
Maximum power / W	405
Open-circuit voltage / V	37.38
Short circuit current / A	13.76
Peak power voltage / V	31.35
Peak power current / A	12.92
Temperature coefficient of short circuit current (Isc) / A	+0.048%/°C
Temperature coefficient of open circuit voltage (Voc) / V	-0.26%/°C
Temperature coefficient of peak power (Pmax) / W	-0.340%/°C
Max. Efficiency	20.70%
Dimension (L×W×H)/mm	1722×1134×30
Weight / kg	21.2
Certificate	IEC 61215, IEC 61730, JS 9001: 2015, ISO 14001:2015, IEC 62716, IEC 61701, IEC TS 62804-1, IEC 60068-2-68

Components

Micro-Inverter	
Model	SL-M600-C
Input / DC	
PV module Power / W	405 (2pcs)
Max. Input Voltage / V	60
MPP Voltage Range / V	25-55
Start-up Voltage / V	15/15
Max. DC Short Circuit Current / A	20/20
Output / AC	
Rated Power / W	600
Rated Grid Voltage / Vac	220/230/240
Grid Connection	L-N-PE
Rated Power Frequency / Hz	50/60
Max. Output Current / A	2.7
Power Factor	>0.99
THDi@ Rated Power	<3%
Max.Units per Branch	7
Efficiency	
Max. Efficiency	96.50%
MPPT Efficiency	>99.9%
Protection Function	
Anti-Islanding Protection	Integrated
Input Reverse Polarity Protection	Integrated
Output Over Current Protection	Integrated
Output Short-Circuit Protection	Integrated
Over Voltage Protection	II (DC), III (AC)
General Data	
Dimension (W×H×D mm)	230×190×46.5
Weight / kg	3.3
Noise Emission(Typical) / Db (A)	20
User Interface	LED
DC Connection Type	MC4
AC Connection Type	Plug-in Connector
Communication	Wifi
Cooling Method	Natural Cooling
Operating Ambient Temperature / °C	-40 ~ +65
Relative Humidity	0% - 100%
Max. Operating Altitude / m	3000(>3000 Derating)
Protection Class (IEC 60529)	IP67
Climatic Category (IEC 60721-3-4)	4K4H
Topology	High Frequency Isolated
Night Consumption / mW	<50
Plug	
Plug + AC cable	JT008 H07RN-F 3G1.5mm ² Black (5 meters)
Female 3P Connector	104420300 X 2_42A
Rated Voltage / V	600
Mounting Structure	
Material	Aluminum alloy 6005-T6, SUS304
Scenario	Balcony,Garden,Wall and etc.
Weight / kg	10
Adjustable angle	30° - 50°
System Warranty	
	10 years