

Residential Smart Solar Solution

Share-Home

March, 2023

Copyright © 2023 Slenegy Technology (A.H.) Co., Ltd. All rights reserved.



PART **1**
About the Market

Distributors and Installers



High labor cost



Difficulties in dealing with different manufacturers



Long design cycle;
Incompatibility
between equipment



Difficulties in fault
identification and
responsibility
attribution



Lack of system
products

Customers



Products not cost-effective



No assurance in system compatibility and reliability



Poor after-sales service

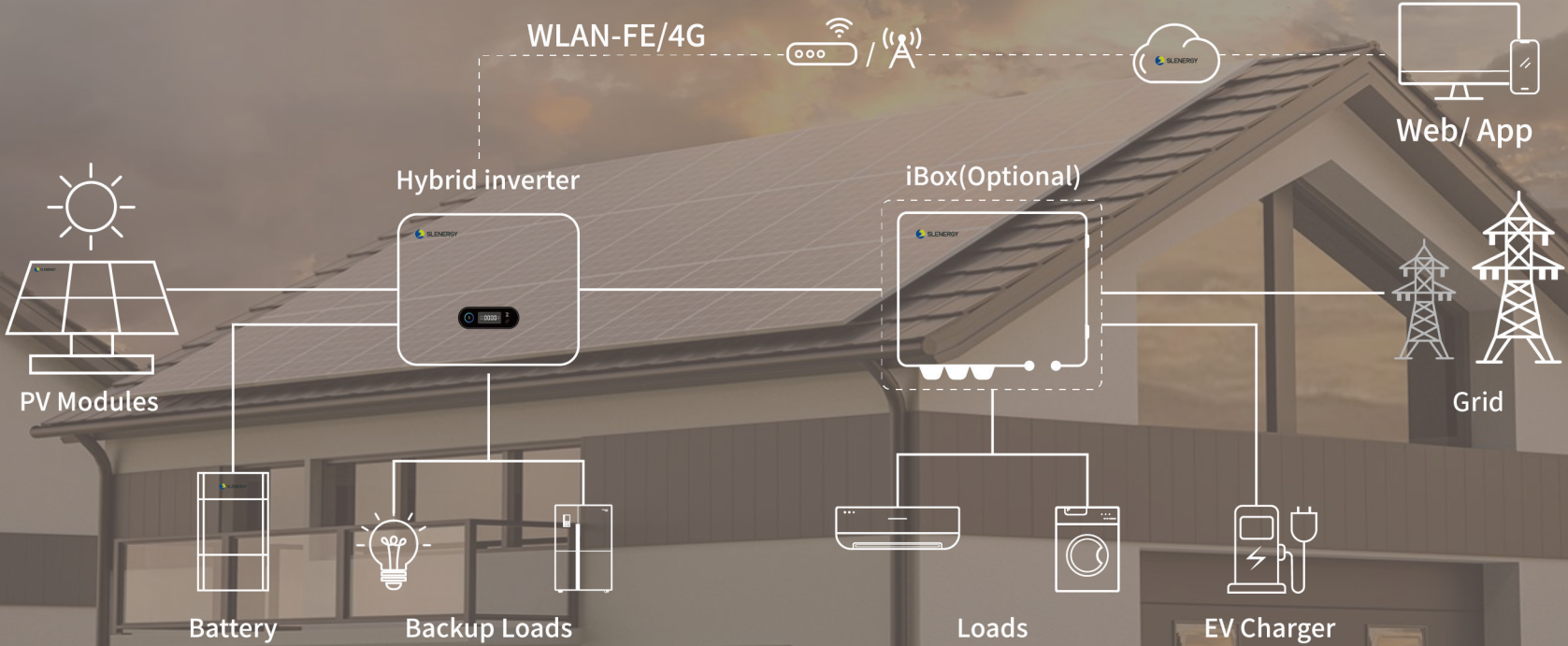


Lack of smart energy solution



PART 2
About iShare-Home

Residential Smart Solar Solution



iShare-Home Smart Solar System

- PV Modules
- Inverter
- Energy Storage Battery
- Mounting Structure
- Cloud Platform
- APP
- iBox (Optional)
- Cable Set





Better compatibility
& reliability



Simple installation with
less labor and time cost



"Zero defect"
product



Residential smart
energy system solution

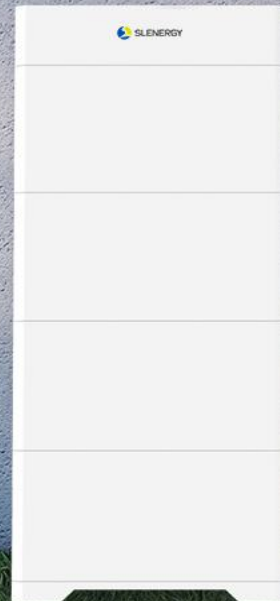


Integrated service
system of pre-sale, sale
and after-sale

Residential Smart Solar Solution

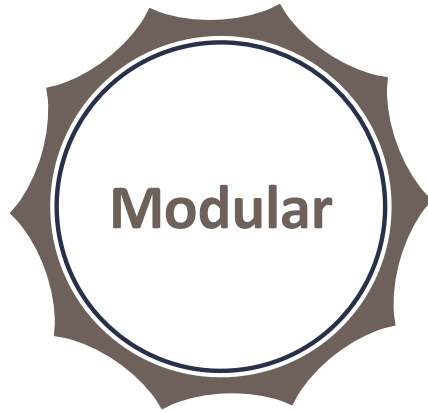
Pursue perfection from every detail

iShare dedicates to bringing safe, reliable and customized products to all families



 Share-Home

 SLENERGY



Integration

Standardized system design

System Design

- Standard BOM



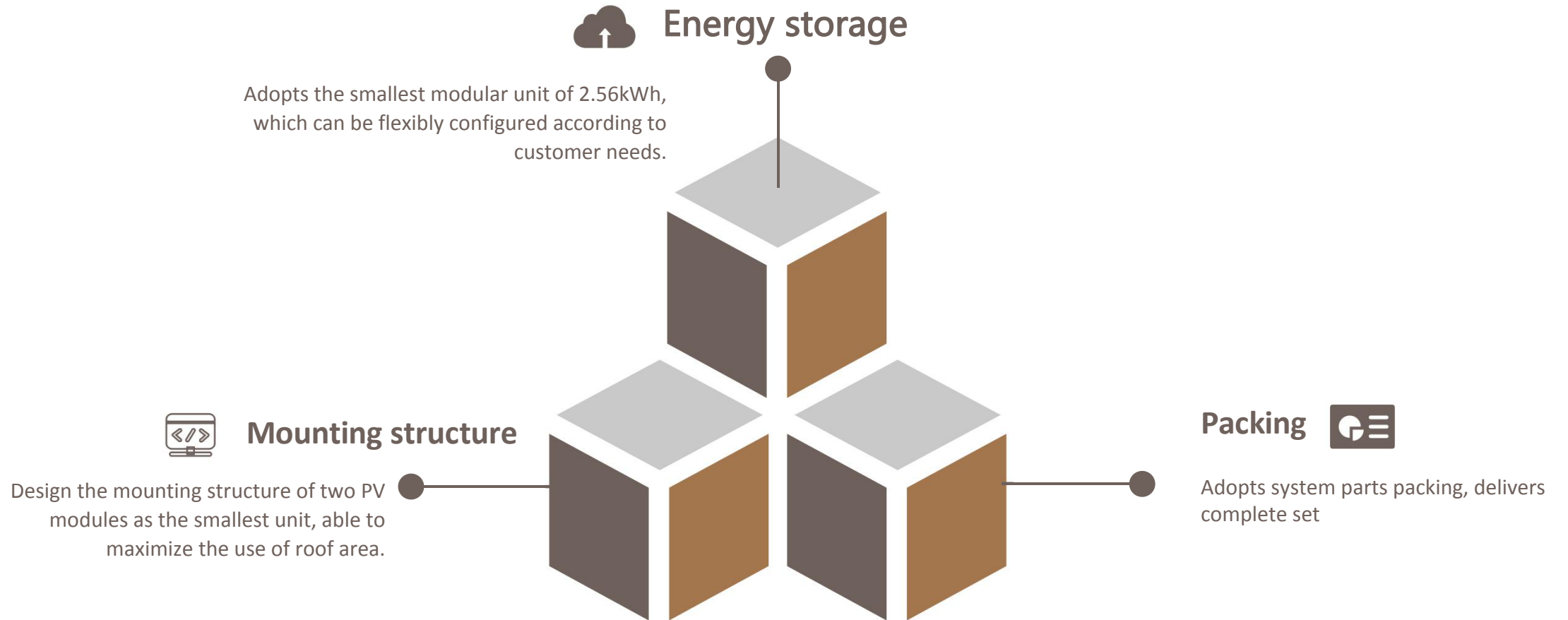
Interface design

- The connection between each equipment is designed with standard interface

Product Design

- Mounting Structure: Able to meet the load and installation requirement in most area of target market
- High compatibility
- Cable design standardization

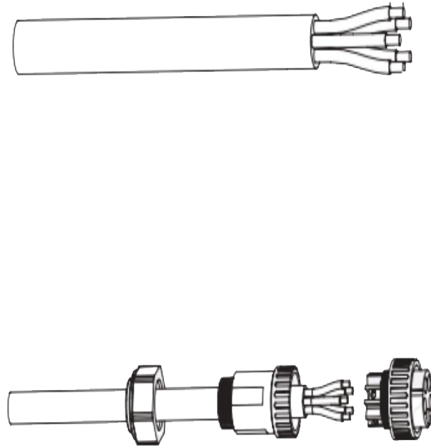
Modular product design



Simple installation



Others : a series of complex processes such as stripping and wiring are required



No wiring, quick installation

- Storage battery installed in stack
- The connection between modules adopts male and female plug, no wiring is required



iShare : Plug-in interface without any tools
Plug and play



Electrical installation save **0.7h**

Simple installation



Simply connect and secure

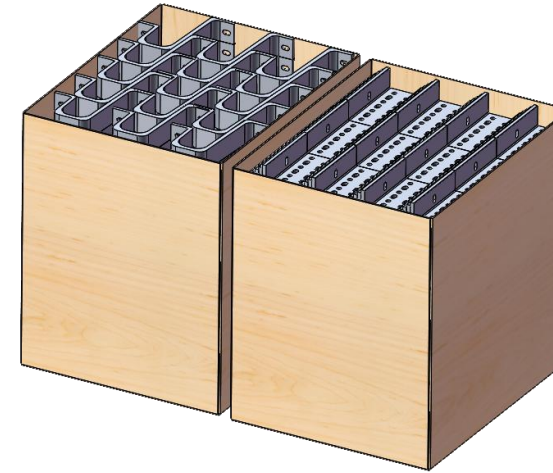
Mounting structure components and cable with connectors are preassembled, only need to be connected and fixed during installation



Save time, simple to install and disassemble

Modular packaging and logistics, greatly reducing the time of primary and secondary sorting, reducing sorting errors; simple to disassemble, simple to use and simple to install

Sorting saves **0.7h**



Single-device-level packaging requires secondary configuration of the system, which is error-prone



Standardized system-level packaging, convenient for transportation, storage and system identification

5kW/10kWh residential solar system installation

	Labor	Time (H)	Installation fee (€)	Percentage
Others	2	8	1200	
iShare	2	6.6	1000	17% ↓

System standardization, modular design, component connection and simple installation design, save installation man-hours, and greatly reduce the customer's system investment cost.

Smart energy management



Real-time monitoring, intelligent control

24-hour monitoring of the power station's operating status, and different operating modes can be selected according to the household's electricity consumption



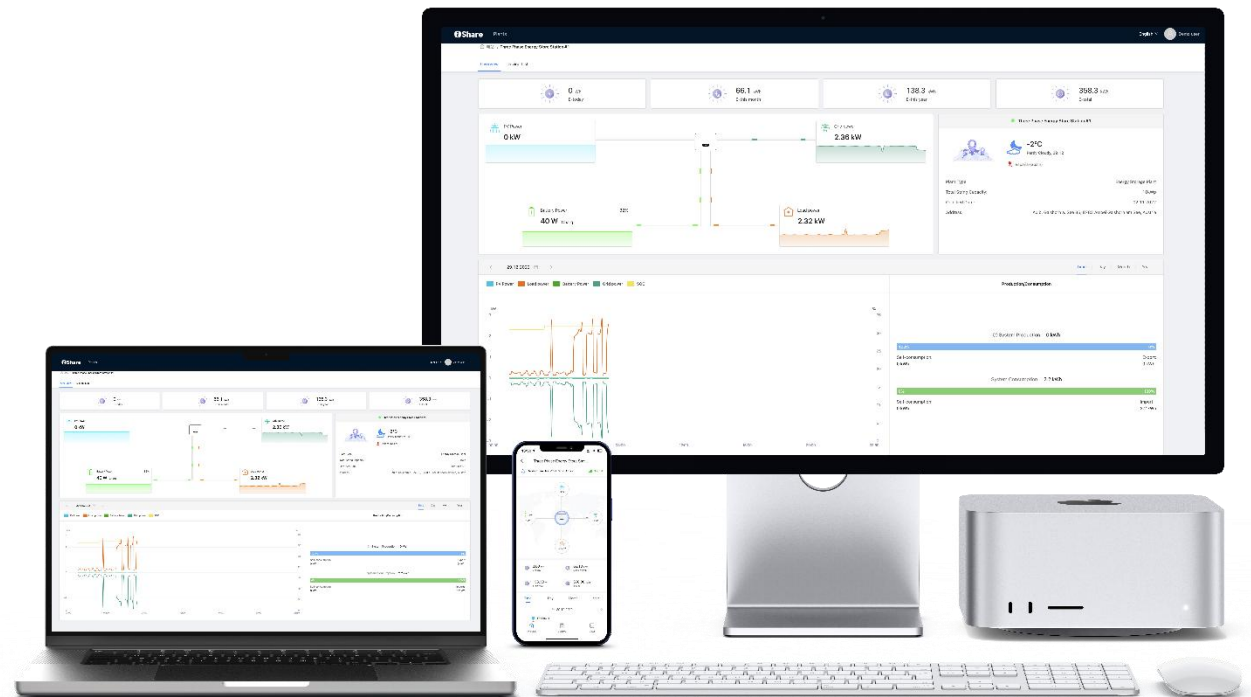
Intelligent detection, safe operation

Able to automatically detect the installation of CT or meter to prevent abnormal operation of the inverter caused by incorrect installation of CT or meter



Remote upgrade, fault alarm

Support remote upgrade and equipment failure alarm function





PART 3
About Products

PV Module

- Max. Efficiency **20.7%**
- Module Power **405W**
- All Black PV modules / low-profile and minimalist aesthetic

2.00%

First year Power
Degradation

0.5%

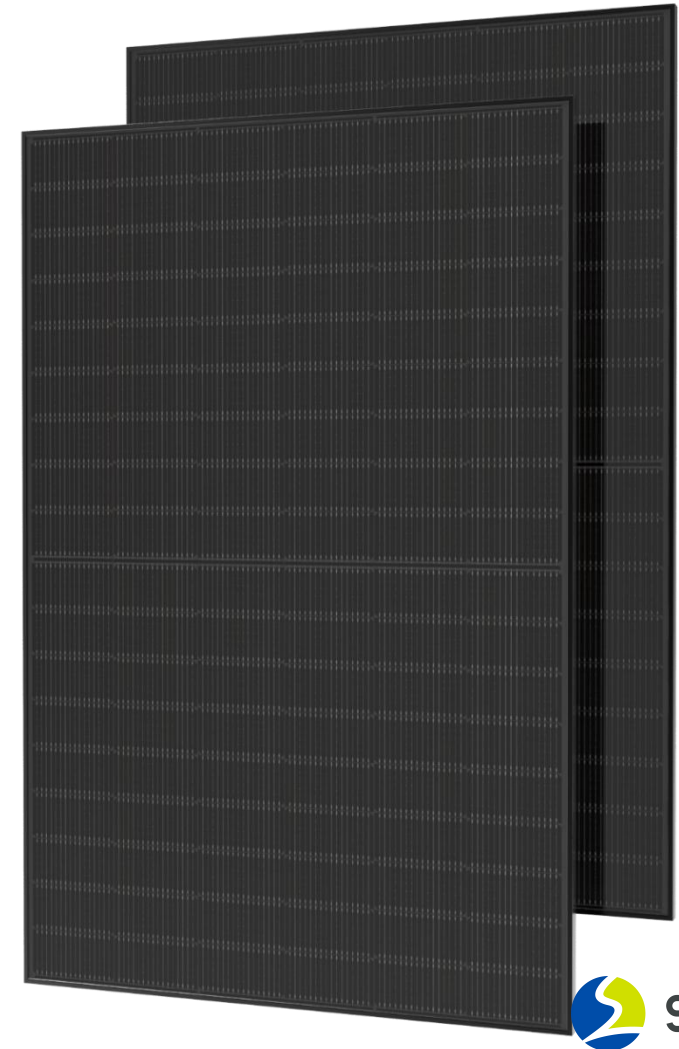
Year 2-25 Power
Degradation

12-year

Warranty for
materials and
Processing

25-Year

Warranty for Extra
Linear Power Output



Inverter

- Max. Efficiency **98.2%**
- Within 10ms UPS-level switching
- Up to 110% unbalanced load
- Up to 125% AC output overloading
- Max. 200% back-up output overloading @60s
- Active power off protection and Arc-fault circuit interrupter



Energy Storage Battery

- Safer LiFePO₄ batteries
- Flexible Application Modular design with extensible capacity from 7.68-20.48kWh
- Reliable Performance Long working life with 6000 cycles @80% DOD
- Stacked structure with optimized installation mode



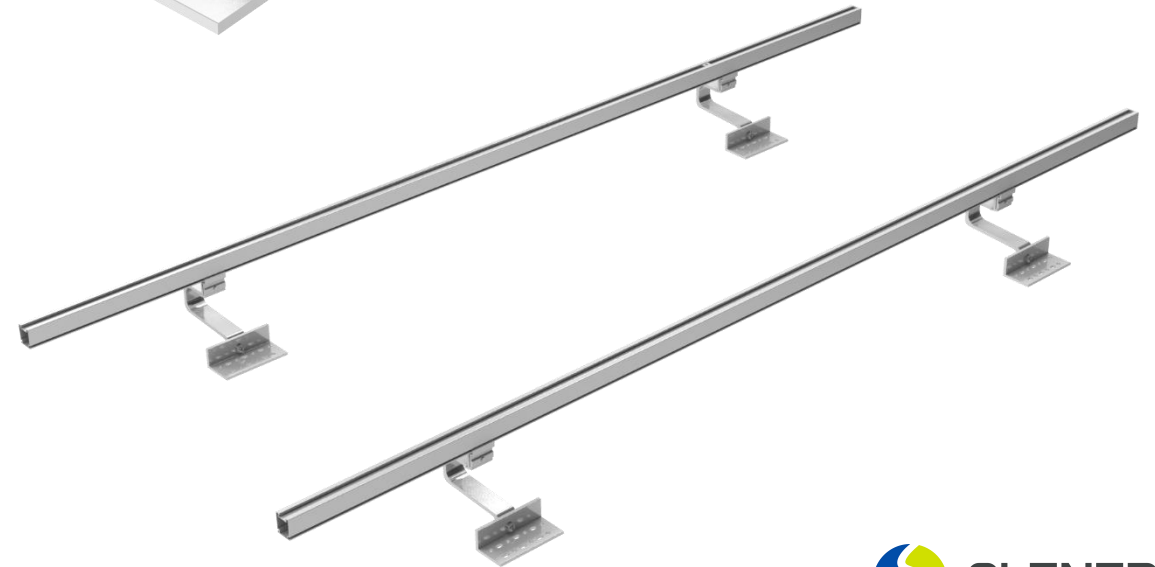
Remark: The products are continuously upgraded, subject to the final delivery.

Mounting Structure

- High strength aluminum alloy
- Minimum modular design with two PV panels
- Better compatibility with roof



- Easy to fix rail and adjust leveling
- Easy to adjust hook height
- Hook height adjusting range 40-55mm



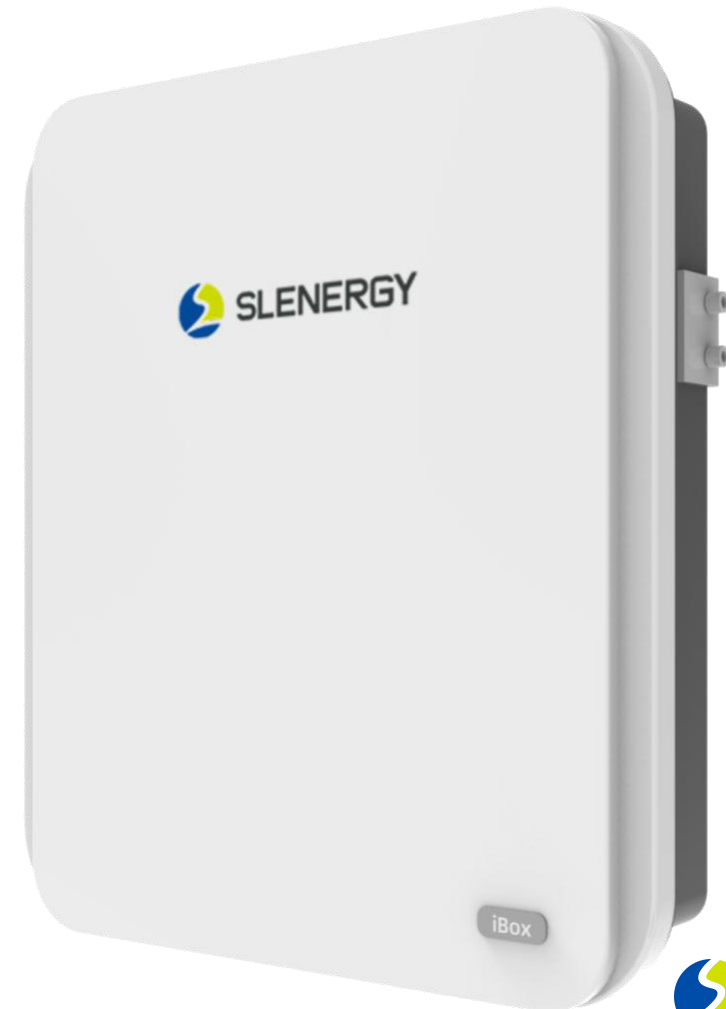
Cable Set

- Standardized wire length, Pre-installed plugs
- Plug and play
- Full cable set




iBox(Optional)

- Integrated power distribution
- System friendly access
- Equipped with a home smart energy management system





iShare-Home Series

System Configuration	4kW System	5kW System	6kW System	8kW System
PV Module	4kW~5kW	6kW~7kW	8kW~9kW	10kW~11kW
No. PV modules (pcs)	10 /12/14	16 /18	20 /22	24 /26/28
Effective Roof Area Approx.	20m ² -30m ²	35m ² -40m ²	45m ² -50m ²	55m ² -65m ²
Inverter	4kW*1set	5kW*1set	6kW*1set	8kW*1set
Battery	7kWh-15kWh	7kWh-17kWh	7kWh-20kWh	7kWh-20kWh
Cable set	1set	1set	1set	1set
Mounting Structure set	1set	1set	1set	1set
Cloud & APP	1set	1set	1set	1set
iBox	Optional	Optional	Optional	Optional
 Power Generation	12-15kWh/Day 4380-5480kWh/Year	17-20kWh/Day 6350-7410kWh/Year	23-26kWh/Day 8470-9530kWh/Year	29-32kWh/Day 10590-11650kWh/Year
 Carbon Dioxide Emission Reduction	Reduce carbon dioxide 5.5 ton per year	Reduce carbon dioxide 7.4 ton per year	Reduce carbon dioxide 9.5 ton per year	Reduce carbon dioxide 11.6 ton per year

•Take Berlin, Germany as a reference. The annual peak sunshine hours are 1253h

•Each 1kWh generated reduce 0.997kg of CO₂

iShare-Home Series

System Configuration	10kW System	12kW System	16kW System
PV Module	12kW~14kW	15kW~17kW	18kW~20kW
No. PV modules (pcs)	30 /32/34/36	38/40/42/44	46/48/50
Effective Roof Area Approx.	70m ² -90m ²	95m ² -115m ²	120m ² -135m ²
Inverter	10kW*1set	12kW*1set	15kW*1set
Battery	7kWh-20kWh	7kWh-20kWh	7kWh-40kWh
Cable set	1set	1set	1set
Mounting Structure set	1set	1set	1set
Cloud & APP	1set	1set	1set
iBox	Optional	Optional	Optional
 Power Generation	35-41kWh/Day 12700-14820kWh/Year	44-50kWh/Day 15880-18000kWh/Year	52-58kWh/Day 19050-21170kWh/Year
 Carbon Dioxide Emission Reduction	Reduce carbon dioxide 14.8 ton per year	Reduce carbon dioxide 17.9 ton per year	Reduce carbon dioxide 21.1 ton per year

- Take Berlin, Germany as a reference. The annual peak sunshine hours are 1253h
- Each 1kWh generated reduce 0.997kg of CO₂

Remark: Larger capacity systems can be configured according to demand.

Valuable

Standardized BOM,save design time
Quick installation,save labor cost
Full process service,customer peace of mind

Reliable

Integrated design,lower failure rate
Unified standard,higher product quality
Active power off protection and Arc-fault circuit interrupter,safer system

Smart

Real-time monitoring,intelligent control
Intelligent detection,safe operation
Remote upgrade,fault alarm

Simple

Preassembled parts, simple connection
Packing in system, convenient for warehouse sorting

